

WCS

WORSBROUGH WEEKLY



Sports days

Sports days will take place next week. Please ensure that children have a hat and water bottle. Due to the hot weather forecast for next week we have made the decision to move the sports days on Tuesday and Wednesday to the morning.

The current forecast for Tuesday and Wednesday is 29 degrees and as you may be aware there is no shade at all on the field. We want children to enjoy sports day and feel that holding it in the morning when it is cooler will be much more enjoyable.

We apologise for any inconvenience this may cause however feel we need to prioritise health and safety of the children.

The updated sports day times are as follows:

Morning nursery and Class 1- Monday 22nd June 9.30am

Afternoon nursery and Class 2-Monday 22nd June 1.30pm

Year 1,2,3 - Tuesday 23rd Jun 9.30am

Year 4,5,6 - PM Wednesday 24th June 9.30am

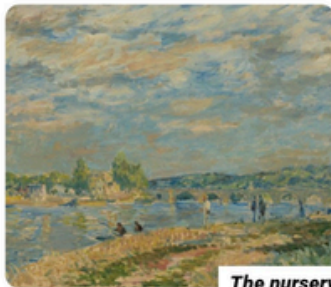
REMINDER

Friday 26th June will be non uniform. We are asking that children bring in voluntary donations of a bottle for our bottle stall or an item for the tombola.



Today is whole school art day and children across school have had lots of opportunities to develop their creativity and artistic skills!





The nursery children looked at the clouds.



We painted cloudy skies.



We made a river and a bridge.

Some children went fishing.



SUMMER TERM DIARY DATES



Summer Fair - Wednesday 1st July 2.30pm

INSET Day - Friday 3rd July

Thursday 9th July Y6 Visit to Base 71

Transition Day to new classes - Monday 13th July

Drama and Music summer showcase Monday 13th July 3.30pm

Year 6 Leavers Assembly - 9:30am Friday 17th July

Trips

F2 Tropical House - 26th June

Year 1 Class 3 - Yorkshire Wildlife Park - 14th July

Leukaemia^{UK}

WE'RE TAKING PART IN CARTWHEEL FOR A CURE!

ON MONDAY 30TH JUNE

We will be **CARTWHEELING THROUGH THE DAY**
to raise awareness and raise money
for **Leukaemia UK**.

TOGETHER
WE CAN
BEAT
LEUKAEMIA



ONE DAY.
ONE SCHOOL.
ONE BIG IMPACT.



HOW YOU CAN HELP



Children can bring in
a **voluntary donation**
to take part.



Pupils and staff will be
around at **home time**
with collection buckets.

BENEFITS FOR LEUKAEMIA UK

- ♥ Funds raised help support **vital research** to find better treatments and, ultimately, a cure for leukaemia.
- ♥ Provides **support and information** for patients and their families when they need it most.
- ♥ Helps **raise awareness** of leukaemia and the impact of blood cancers.
- ♥ Every pound raised makes a real difference to saving lives.



BENEFITS FOR PUPILS

- ★ Promotes **physical activity**, fitness and **coordination**.
- ★ Builds **confidence**, resilience and a sense of **achievement**.
- ★ Encourages **kindness**, empathy and understanding.
- ★ Gives a real sense of **purpose** and the power of **teamwork**.

Cartwheel for a Cure

ONE DAY. ONE SCHOOL. ONE BIG IMPACT.





The winning house for the last week was **Headingley!**

Here are our house heroes...

Wembley: Eric, Alice

Headingley: Jacob, Maya

Twickenham: Rae, Henry

Wimbledon: Jack, Tab=nisha

Lunch Menu for next week!

SPRING/SUMMER 2026 MENU **WEEK 3**

		MONDAY	TUESDAY	WEDNESDAY	THURSDAY	FRIDAY
HOT DISHES	OPTION 1	Cheese and Tomato Pizza with Potato Wedges	THEME DAY Chicken Burger with Herby Diced Potatoes	Roast Gammon with Yorkshire Pudding, Potatoes and Gravy	Beef Lasagne with Garlic Doughballs	Fish Fingers with Chips
	OPTION 2	Creamy Garlic Pasta	Quorn Chow Mein	Quorn Roast with Yorkshire Pudding, Potatoes and Gravy	Meatless Ball Sub with Potato Wedges	Quorn Dippers with Chips
ALL DISHES ARE SERVED WITH CRUNCHY VEGETABLES AND / OR FRESH SALAD						
VEG	Green Beans Salad Bar	Sweetcorn Big Bowl Salad	Broccoli Carrots	Sweetcorn Salad Bar	Garden Peas Baked Beans	
DESSERT	Watermelon	Vanilla Crunch	Oatie Biscuit with Fruit	Chocolate Fudge Cake	Ice Cream	